


## les saisons

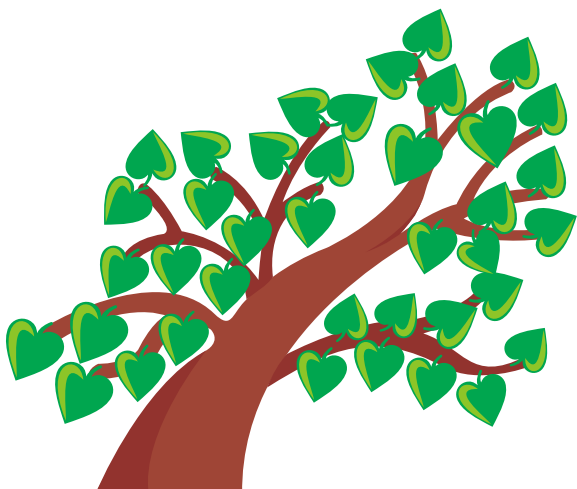


 Se repérer dans le temps et dans l'espace.

 Découvrir les saisons et ses caractéristiques.

 Construire des représentations dans le temps.

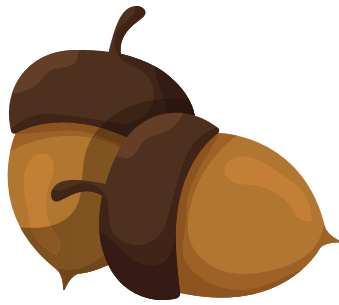
 Identifier les quatre saisons : printemps, été, automne et hiver.



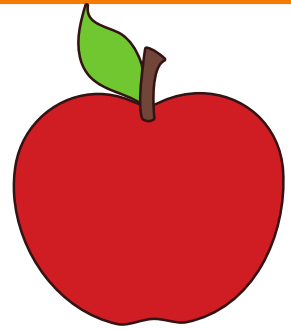
# l'imagier de l'automne



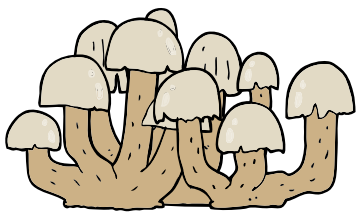
Arbre d'automne



le gland



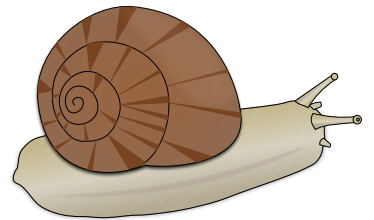
la pomme



les champignons



la feuille



l'escargot



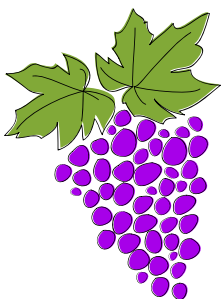
la pomme de pin



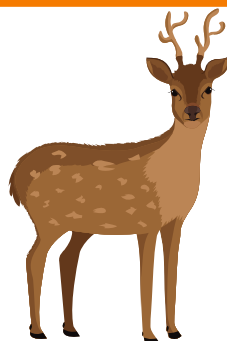
la citrouille



la branche



le raisin



le cerf



le hérisson

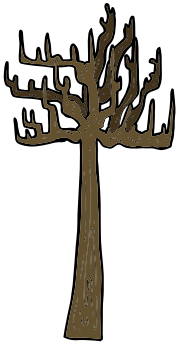
Pour réaliser cet arbre d'automne en gommettes, il faut télécharger et imprimer le dessin arbre.

Il suffit de coller les gommettes rondes au bout des branches et quelques gommettes au sol (les feuilles qui tombent). pendant cette activité l'enfant doit choisir les couleurs des feuilles d'automne et vous citer la couleur. Laissez l'enfant autonome en le guidant.

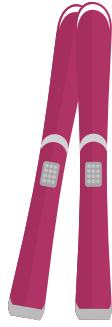




# l'imagier de l'hiver



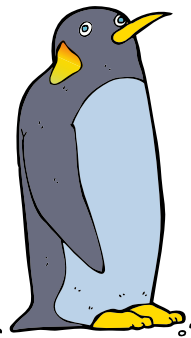
L'arbre d'hiver



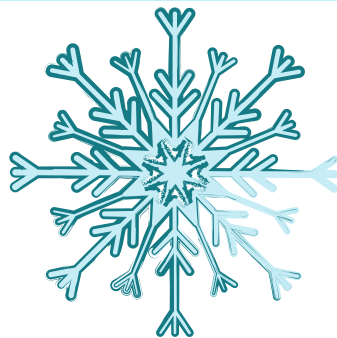
Les skis



Une écharpe



un pingouin



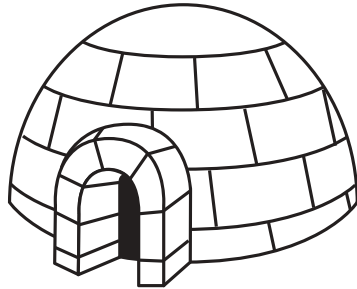
un flocon de neige



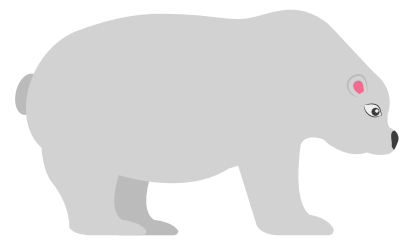
un bonnet



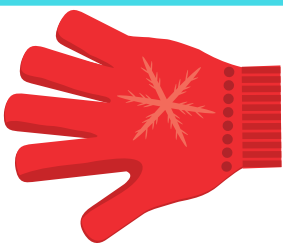
un bonhomme de neige



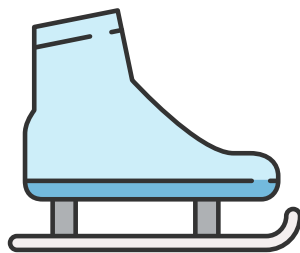
un igloo



un ours polaire



un gant








un patin à glace

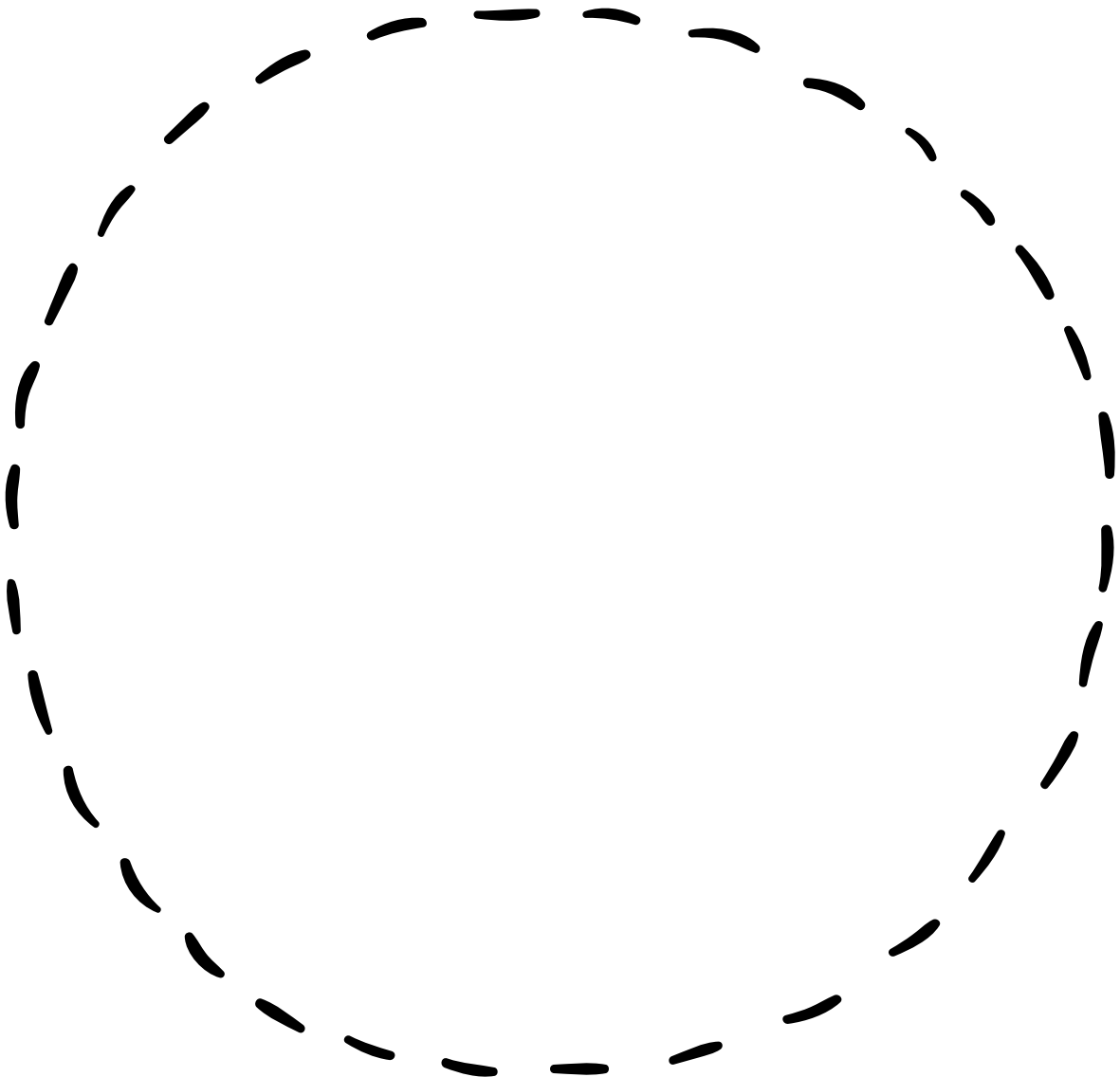
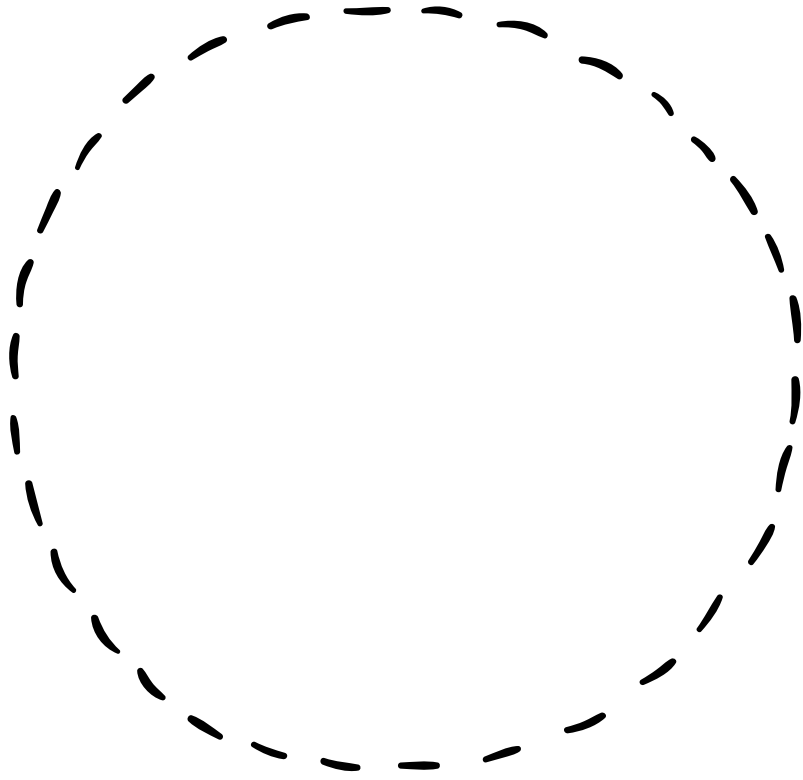


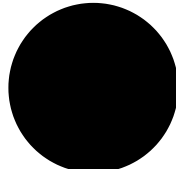
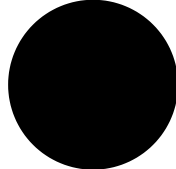
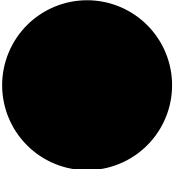
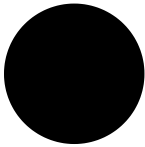
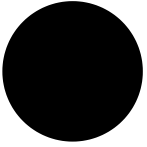
un chocolat chaud

# Crée ton bonhomme de neige



-  Cette activité est à réaliser en plusieurs étapes selon l'attention de l'enfant
-  Le matériel dont vous aurez besoin: une feuille A4, de la peinture bleue, du coton, un rouleau à peinture, le patron du bonhomme de neige et de la colle.
-  Demander à l'enfant de peindre sur une feuille A4 à l'aide d'un rouleau à peinture toute la feuille en bleu et laisser sécher.
-  Une fois sec, l'adulte découpe les parties du bonhomme de neige. Ensuite l'enfant colle sur la feuille le bonhomme de neige. Guidez-le dans sa démarche pour composer son bonhomme de neige et vocabulariser ses actions lors de l'activité..
-  Dernière étape : proposez des petits morceaux de coton pour qu'il puisse les coller sur la feuille.

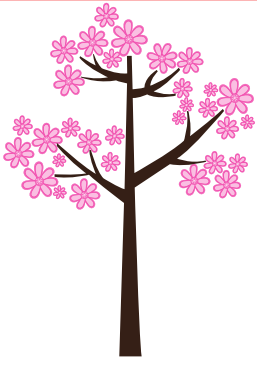




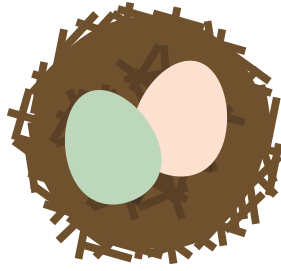




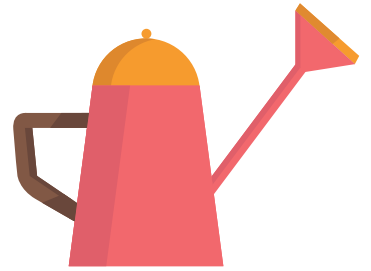
# l'imagier du printemps



l'arbre du printemps



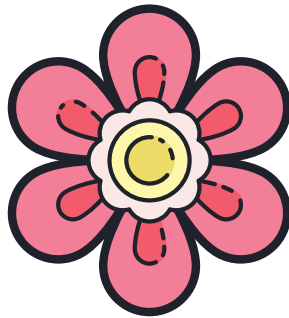
le nid et ses oeufs



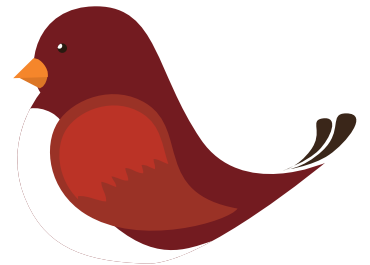
l'arrosoir



la coccinelle



la fleur



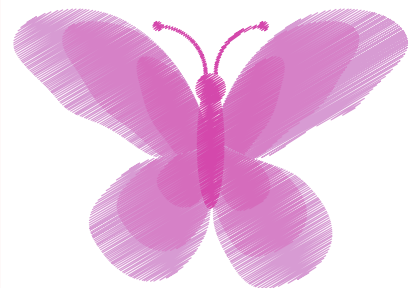
l'oiseau



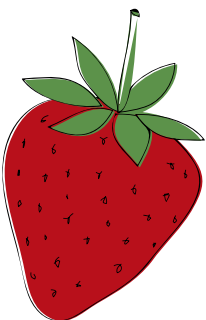
la pelle



des graines



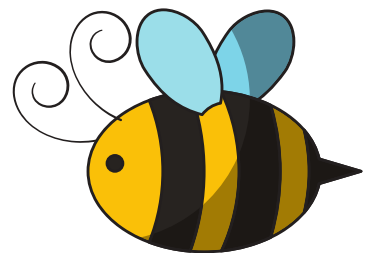
un papillon



Une fraise

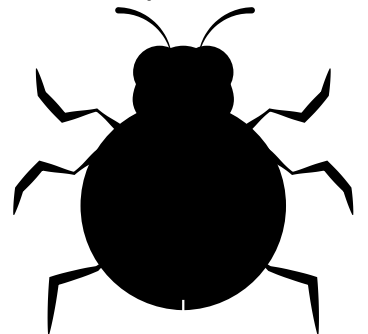
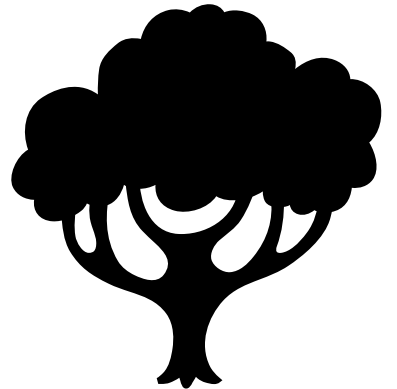
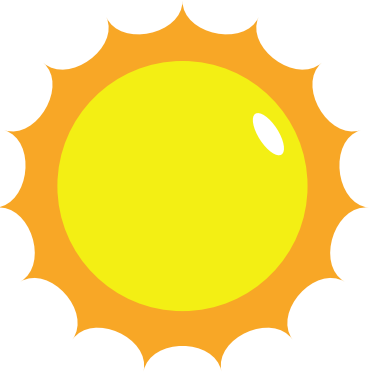
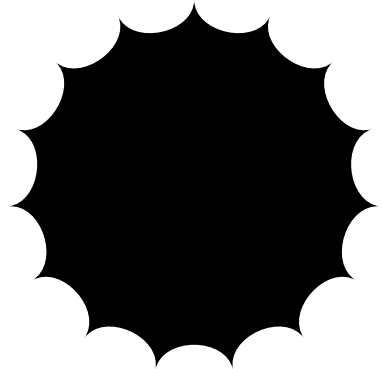
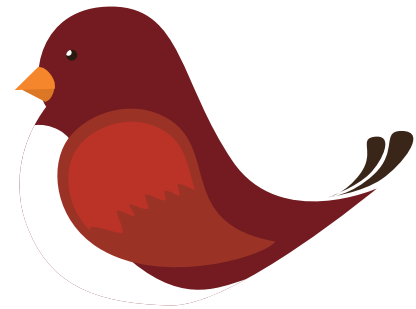
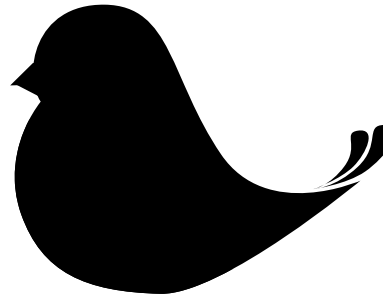
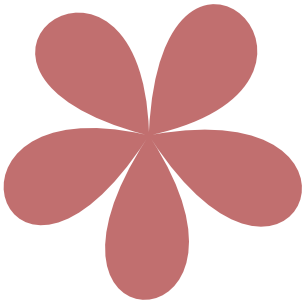
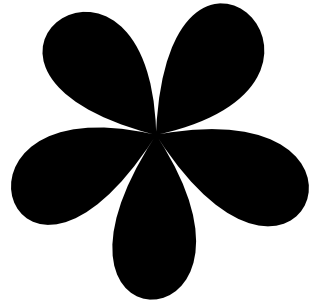


un arc-en-ciel

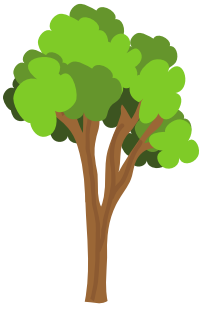


Une abeille

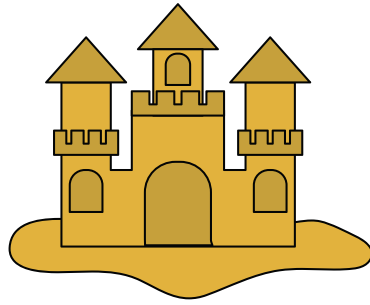
Relie l'image correspondante à son ombre



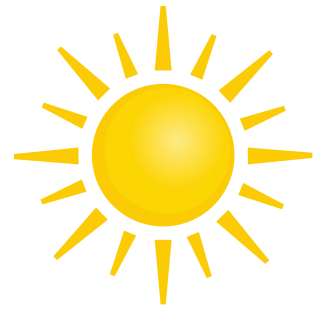
# L'imagier de l'été



l'arbre de l'été



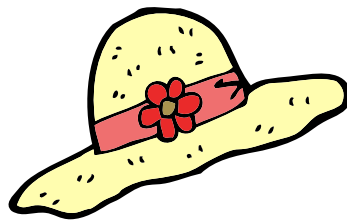
le château de sable



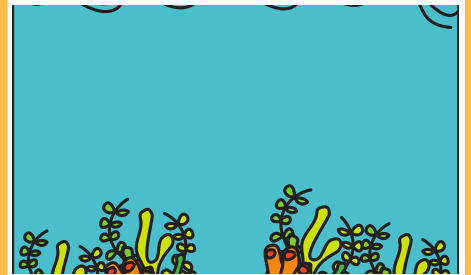
le soleil



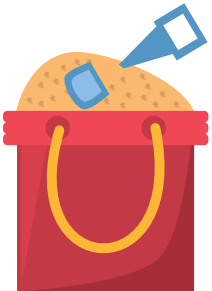
le ballon



le chapeau



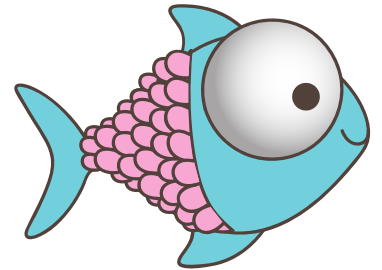
l'océan



le seau et la pelle



la plage



le poisson



le coquillage



la glace



le crabe

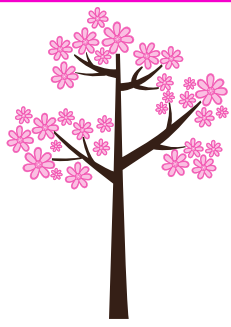
Colorie les glaces en essayant de ne pas dépasser









CONSIGNES: LES SAISONS :DECOUPE LES IMAGES CORRESPONDANT À LA BONNE SAISON.




Three empty boxes for labeling.



Three empty boxes for labeling.



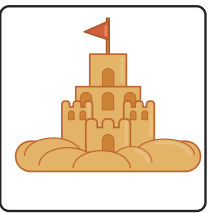
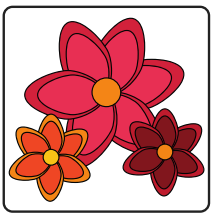
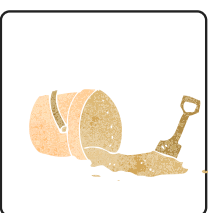
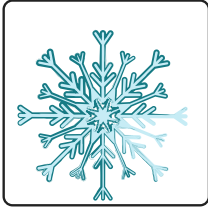
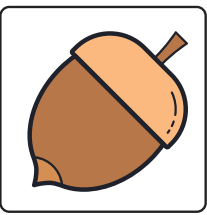
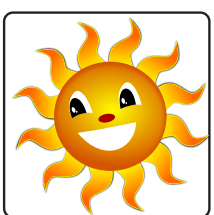
Three empty boxes for labeling.



Three empty boxes for labeling.



Un adulte découpe les images, et l'enfant colle les images correspondant aux saisons.





le printemps



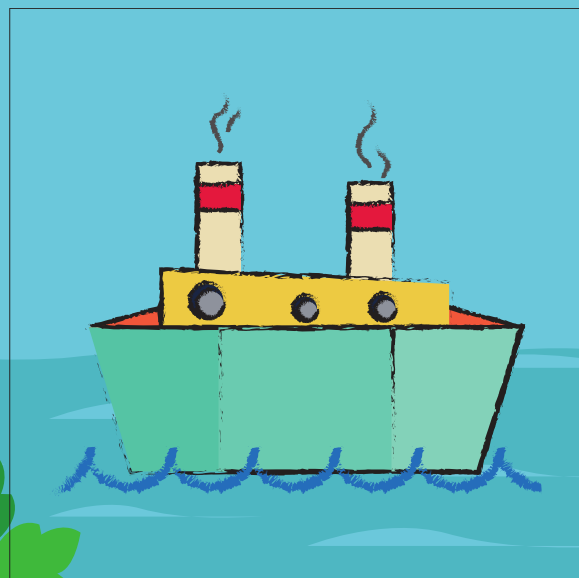
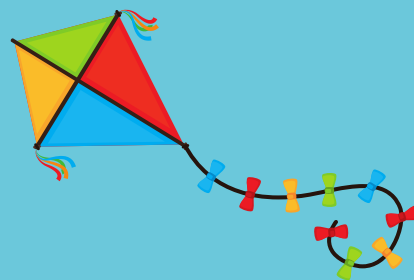
*l'hiver*



*l'automne*



*l'été*



Toute reproduction pour la vente est strictement interdite sans l'autorisation expresse de  
La Bulle ô Mômes

